

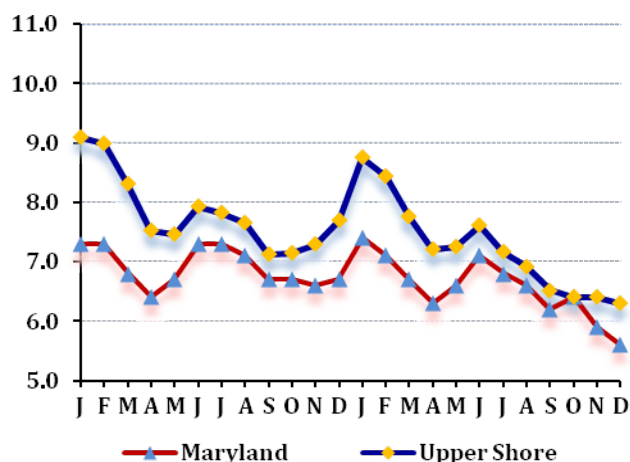
LABOR FORCE STATUS 2012-2013*

Annual Averages

	2012	2013	Change
Labor Force	90,755	90,478	-277
Employment	83,640	83,934	294
Unemployment	7,115	6,544	-571
Unemployment Rate	7.8	7.2	-0.6
Maryland Rate	6.9	6.6	-0.3

--Not Seasonally Adjusted

UNEMPLOYMENT TRENDS - Jan. 2012-Dec. 2013*



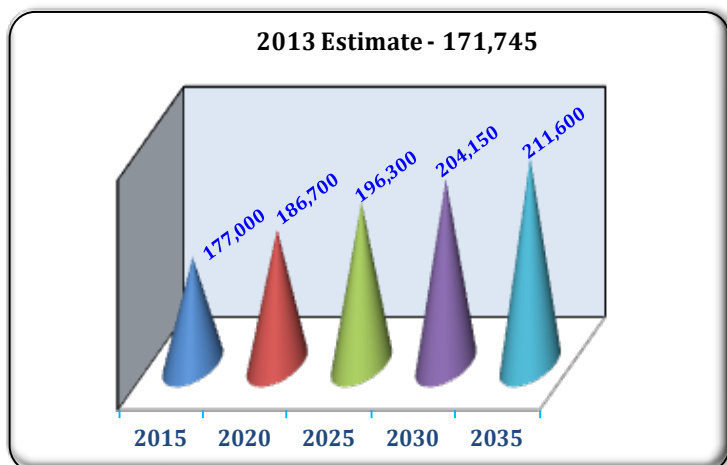
EMPLOYMENT BY SECTOR - 2013 ANNUAL*

Sector	Employment
Total Employment	60,103
Government Total	9,351
Federal	625
State	1,665
Local	7,061
Private Sector Total	50,752
Natural Resources & Mining	1,439
Construction	3,260
Manufacturing	5,934
Trade, Transportation, & Utilities	12,591
Information	468
Financial Activities	2,074
Professional & Business Services	4,964
Education & Health Services	9,677
Leisure & Hospitality	8,234
Other Services/Unclassified	2,111

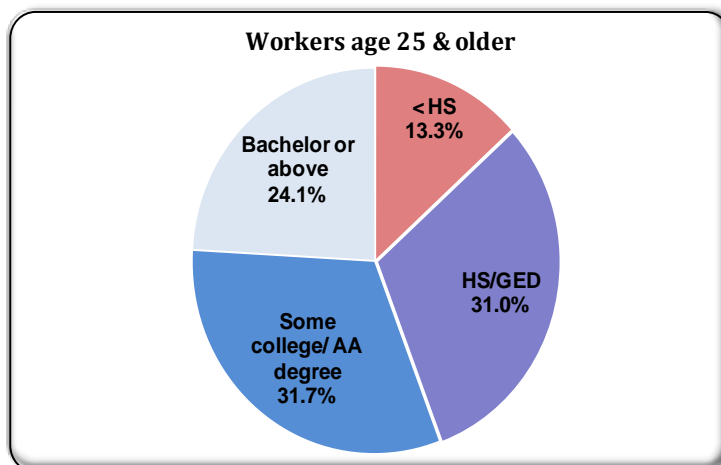
PRIVATE SECTOR GROWTH - Jan. 2012-Dec. 2013*

Industry	Growth
Amusements, gambling, and recreation	252
Ambulatory health care services	163
General merchandise stores	146
Warehousing and storage	102
Specialty trade contractors	100
Educational services	95
Heavy and civil engineering construction	88
Electronic markets and agents and brokers	88
Telecommunications	67
Management of companies and enterprises	64

POPULATION: 2010 CENSUS & PROJECTIONS ***



WORKFORCE BY EDUCATION LEVEL - 2013Q2**



Sources: *Maryland Department of Labor, Licensing and Regulation **U.S. Census Bureau *** Maryland State Data Center