

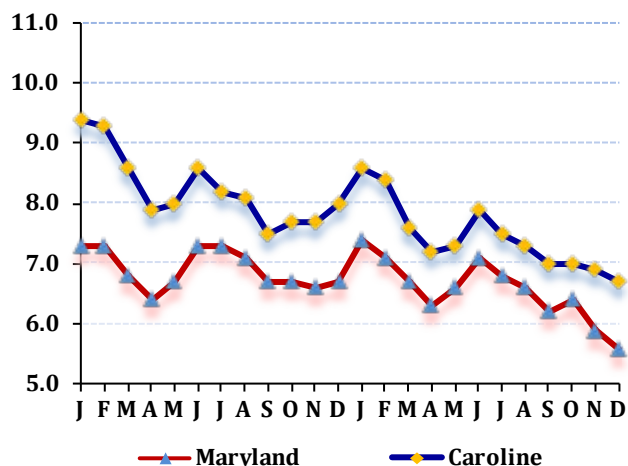
LABOR FORCE STATUS 2012-2013*

Annual Averages

	2012	2013	Change
Labor Force	16,804	16,933	129
Employment	15,416	15,668	252
Unemployment	1,388	1,265	-123
Unemployment Rate	8.3	7.5	-0.8
Maryland Rate	6.9	6.6	-0.3

--Not Seasonally Adjusted

UNEMPLOYMENT TRENDS - Jan. 2012-Dec. 2013*



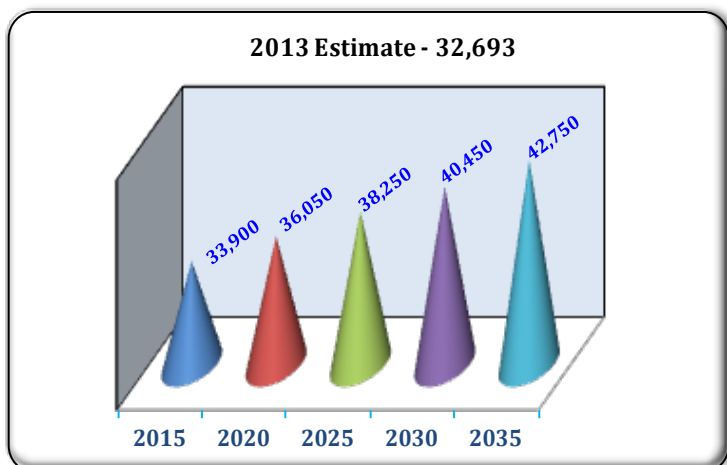
EMPLOYMENT BY SECTOR - 2013 ANNUAL*

Sector	Employment
Total Employment	9,366
Government Total	1,639
Federal	73
State	189
Local	1,377
Private Sector Total	7,727
Natural Resources & Mining	492
Construction	606
Manufacturing	1,143
Trade, Transportation, & Utilities	2,656
Information	163
Financial Activities	211
Professional & Business Services	395
Education & Health Services	1,373
Leisure & Hospitality	492
Other Services/Unclassified	196

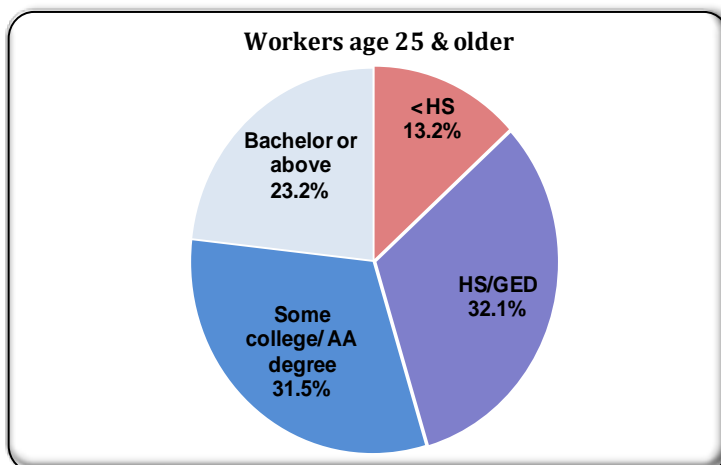
PRIVATE SECTOR GROWTH - Jan. 2012-Dec. 2013*

Industry	Growth
General merchandise stores	191
Truck transportation	54
Specialty trade contractors	41
Food and beverage stores	40
Crop production	25
Nursing and residential care facilities	23
Heavy and civil engineering construction	19
Motor vehicle and parts dealers	18
Professional and technical services	18
Agriculture and forestry support activities	8

POPULATION: 2010 CENSUS & PROJECTIONS ***



WORKFORCE BY EDUCATION LEVEL - 2013Q2**



Sources: *Maryland Department of Labor, Licensing and Regulation **U.S. Census Bureau *** Maryland State Data Center

Martin O'Malley, Governor
Division of Workforce Development and Adult Learning, Office of Workforce Information and Performance, August 2014

Anthony G. Brown, Lt. Governor

Leonard J. Howie III, Secretary

Division of Workforce Development and Adult Learning, Office of Workforce Information and Performance, August 2014