

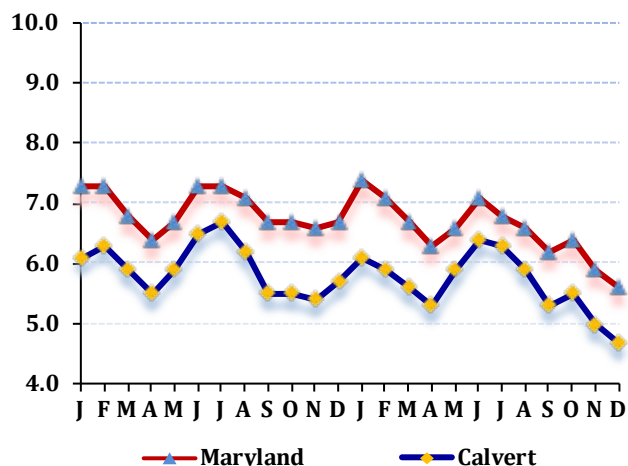
## LABOR FORCE STATUS 2012-2013\*

### Annual Averages

	2012	2013	Change
Labor Force	47,972	47,951	-21
Employment	45,125	45,237	112
Unemployment	2,847	2,714	-133
Unemployment Rate	5.9	5.7	-0.2
Maryland Rate	6.9	6.6	-0.3

--Not Seasonally Adjusted

## UNEMPLOYMENT TRENDS - Jan. 2012-Dec. 2013\*



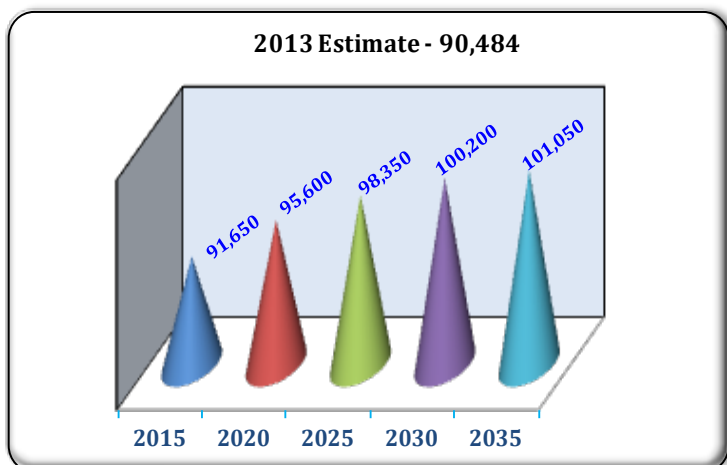
## EMPLOYMENT BY SECTOR - 2013 ANNUAL\*

Sector	Employment
Total Employment	21,578
Government Total	4,272
Federal	131
State	288
Local	3,853
Private Sector Total	17,306
Natural Resources & Mining	51
Construction	1,793
Manufacturing	596
Trade, Transportation, & Utilities	4,678
Information	118
Financial Activities	606
Professional & Business Services	2,134
Education & Health Services	3,553
Leisure & Hospitality	3,065
Other Services/Unclassified	712

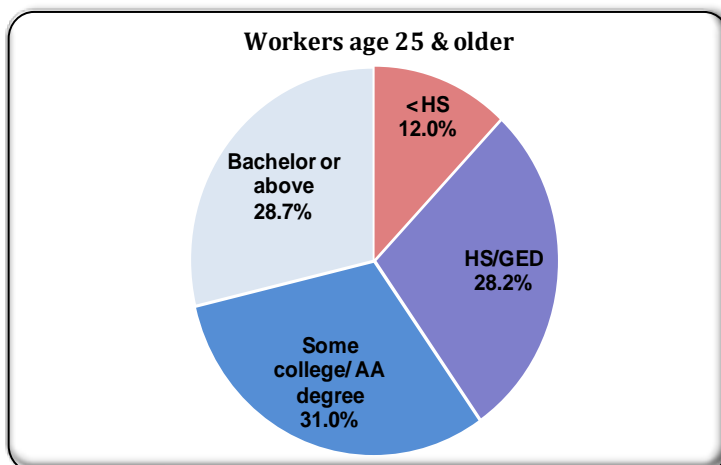
## PRIVATE SECTOR GROWTH - Jan. 2012-Dec. 2013\*

Industry	Growth
Administrative and support services	136
Management of companies and enterprises	70
Merchant wholesalers, durable goods	42
Food and beverage stores	41
Real estate	31
Heavy and civil engineering construction	29
Machinery manufacturing	22
Food services and drinking places	17
Clothing and clothing accessories stores	14
Amusements, gambling, and recreation	8

## POPULATION: 2010 CENSUS & PROJECTIONS \*\*\*



## WORKFORCE BY EDUCATION LEVEL - 2013Q2\*\*



Sources: \*Maryland Department of Labor, Licensing and Regulation \*\*U.S. Census Bureau \*\*\* Maryland State Data Center

Martin O'Malley, Governor  
Division of Workforce Development and Adult Learning, Office of Workforce Information and Performance, August 2014

Anthony G. Brown, Lt. Governor

Leonard J. Howie III, Secretary

Division of Workforce Development and Adult Learning, Office of Workforce Information and Performance, August 2014