

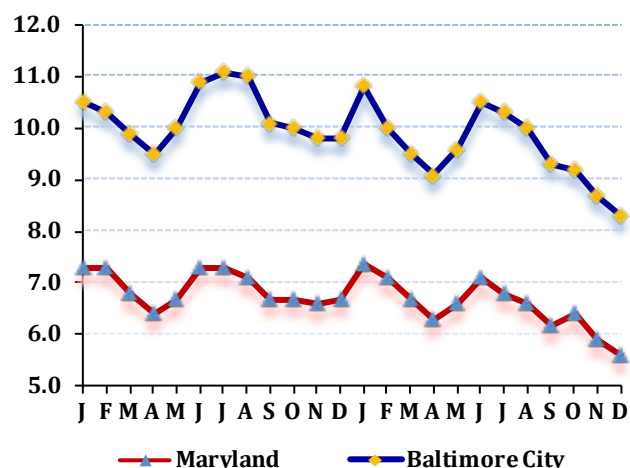
## LABOR FORCE STATUS 2012-2013\*

### Annual Averages

	2012	2013	Change
Labor Force	277,409	277,340	-69
Employment	249,021	250,660	1,639
Unemployment	28,388	26,680	-1,708
Unemployment Rate	10.2	9.6	-0.6
Maryland Rate	6.9	6.6	-0.3

--Not Seasonally Adjusted

## UNEMPLOYMENT TRENDS - Jan. 2012-Dec. 2013\*



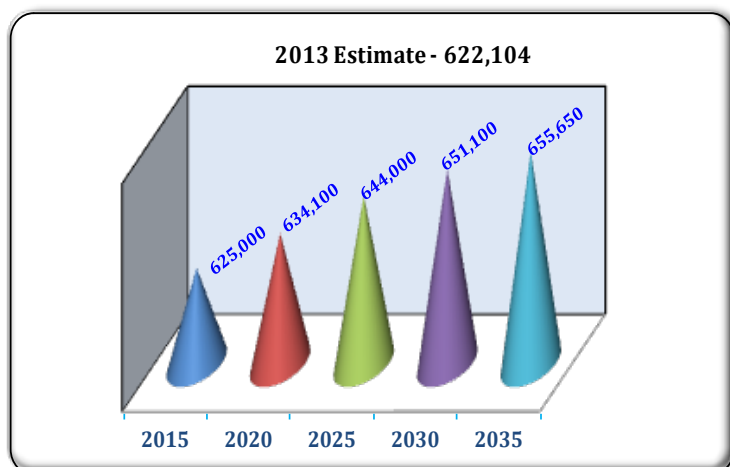
## EMPLOYMENT BY SECTOR - 2013 ANNUAL\*

Sector	Employment
Total Employment	330,746
Government Total	69,110
Federal	9,677
State	34,431
Local	25,002
Private Sector Total	261,636
Natural Resources & Mining	9
Construction	9,431
Manufacturing	12,038
Trade, Transportation, & Utilities	38,647
Information	3,665
Financial Activities	16,362
Professional & Business Services	42,748
Education & Health Services	100,533
Leisure & Hospitality	27,057
Other Services/Unclassified	11,146

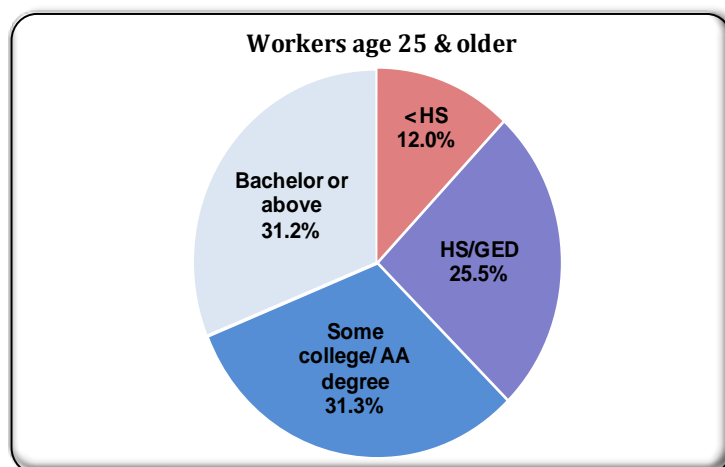
## PRIVATE SECTOR GROWTH - Jan. 2012-Dec. 2013\*

Industry	Growth
Administrative and support services	2,967
Hospitals	1,721
Ambulatory health care services	893
Food services and drinking places	727
Professional and technical services	610
Electronic markets and agents and brokers	390
Support activities for transportation	255
Securities, commodity contracts, investments	220
Personal and laundry services	206
Management of companies and enterprises	154

## POPULATION: 2010 CENSUS & PROJECTIONS \*\*\*



## WORKFORCE BY EDUCATION LEVEL - 2013Q2\*\*



Sources: \*Maryland Department of Labor, Licensing and Regulation \*\*U.S. Census Bureau \*\*\* Maryland State Data Center

Martin O'Malley, Governor

Anthony G. Brown, Lt. Governor

Leonard J. Howie III, Secretary

Division of Workforce Development and Adult Learning, Office of Workforce Information and Performance, August 2014